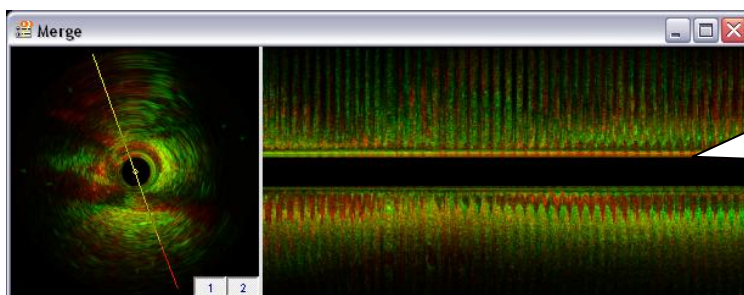
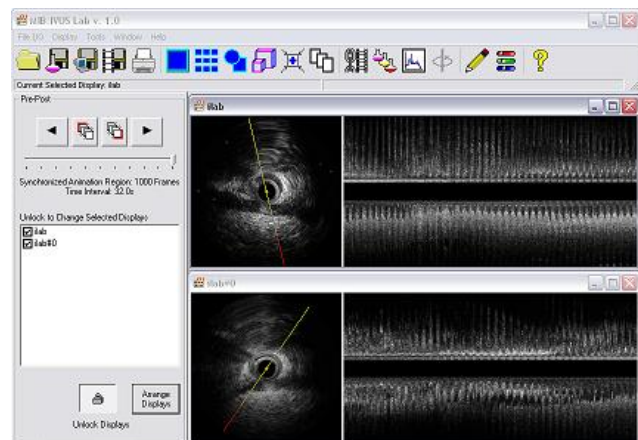


## Medical Imaging Bench (MIB): Pre-Post Comparison and Multi-Modality Image Research Software

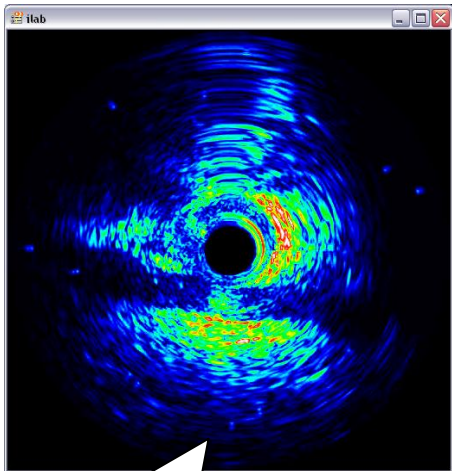
Medical Imaging Bench (MIB) from INDEC Systems is a multi-modality, multi-image application for cardiovascular research. Although primarily designed for Intravascular Ultrasound (IVUS) images, MIB can also be used for analysis of Optical Coherence Tomography (OCT) images, Angiography images, Computed Tomography (CT) images, as well as most DICOM, BMP, JPEG, TIF, and AVI files.



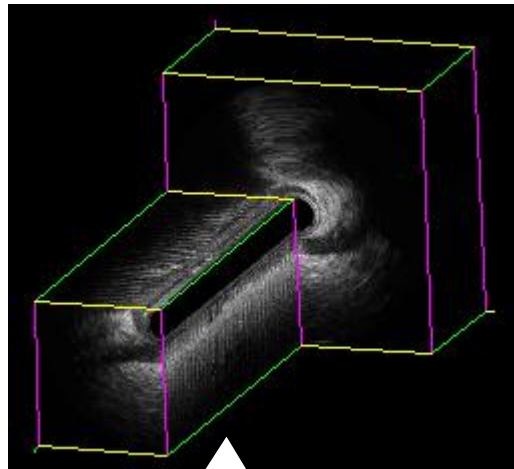
Unlike most medical imaging software, MIB's unique "display form" design allows multiple images to be opened and viewed simultaneously. Unique, easy to use tools allow for a wide range of Pre and Post IVUS analysis. Features such as synchronized animation, image rotation (adjust and align vessel segments), and image merge (overlap and compare two vessel segments) all aid in MIB's simultaneous Pre and Post analysis.



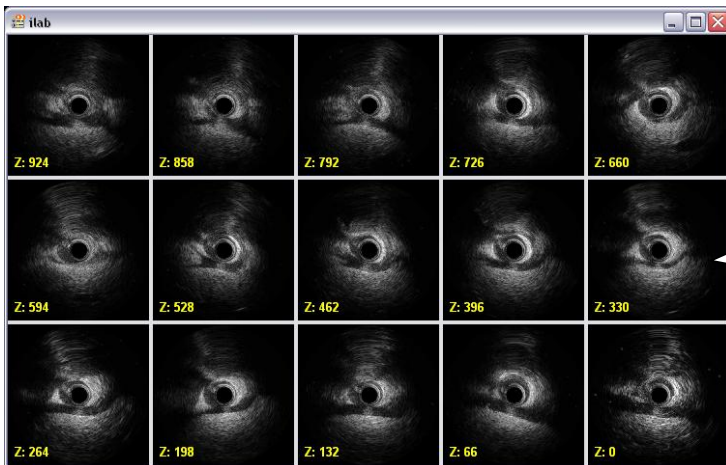
**Color merge feature helps detect vessel morphology differences during Pre-Post analysis**



Versatile colorization and intensity tools aid in tissue characterization and edge detection



3D tools provide unique visualization of IVUS data



View multiple frames of a single multi-frame image using tiled view options

### Features:

- Can open most medical files (IVUS, OCT, Angio, and CT DICOM; BMP; TIF; AVI; JPEG)
- View multiple images simultaneously - ideal for Pre and Post Analysis
- "Load Basins" make selecting multiple files for Pre and Post loading fast and easy
- Image rotation for vessel alignment during Pre and Post analysis
- Color Merge for vessel comparison during Pre and Post analysis
- Image Colorization and Intensity tools
- View all of your measurements drawn in echoPlaque or IVUS machine (iLab, Galaxy, s5) or create new measurements
- Tiled and 3D views provide unique visualization options
- Region Intensity Profiles for advanced research
- Save as DICOM, echoPlaque or export to AVI, WMV, BMP, TIF