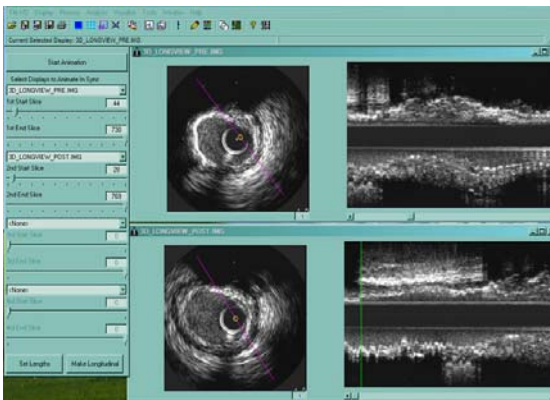


Medical Imaging Bench

IVUS Pre/Post Comparison 2&3D Visualization, Analysis

INDEC Medical Systems introduces a significant expansion to its IVUS product line: **Medical Imaging Bench (MIB)**, also referred to as IVUS Lab, an optional package for new and existing echoPlaque users. MIB focuses on 6 major areas of new functionality:

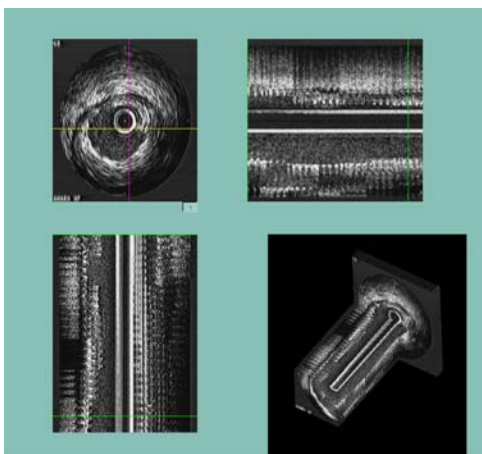
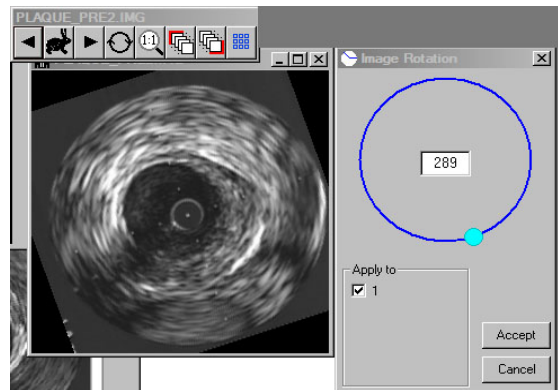
- Pre and Post visualization for detailed comparisons of multiple data sets.
- View/Merge up to 4 data sets
- Make AVI files that now include the longitudinal view
- Multiplane 3D display – a new way to view your data sets
- Intensity Profiling, via color look up tables
- Support for Region of Interest studies



MIB is the ideal addition for DES **Pre/Post comparisons**, providing functionality that is unique, time saving and easy to use .

With the optional MIB package you can import up to four (4) echoPlaque data sets and display each in active window. In active movie mode, you can simultaneously and synchronously animate them. A range can be selected to allow visualization and simultaneous examination of the precise segment desired.

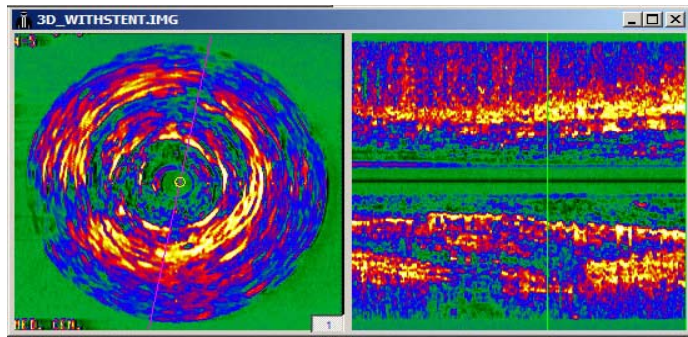
Rotate the single image or entire data set, with an easy to use interface, for more meaningful comparisons.



3D Visualization – A new way to look at IVUS images. Simultaneous and synchronous display of XY, XZ and YZ planes in separate windows with an interactive 3D display window which can be rotated and adjusted to focus on subregions of the data

Additional Features

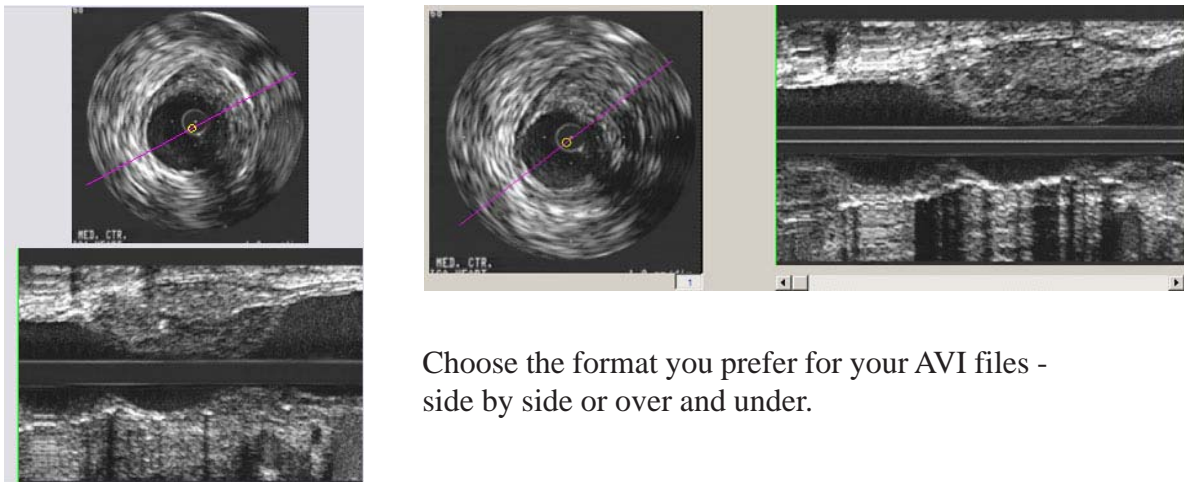
- Color or Gray Scale Intensity Visualization – ability to view both cross-section and long view by intensity visualization using color or gray scale palettes.



- Merge multiple images and display the result either side by side or color merged.

With this powerful feature, multiple images can easily be compared.

- Create a new type of AVI File - enhance your presentations and reports with Pre/Post AV files which includes the Longitudinal view.



Choose the format you prefer for your AVI files - side by side or over and under.

ADDING MIB SOFTWARE TO YOUR CURRENT ECHOPLAQUE SYSTEM

In order to add MIB to your existing echoPlaque system you must order MIB as an option to a new echoPlaque system or order it as an add on to your existing system running echoPlaque version 2.7. In the add on case, please provide your dongle identification number with your order.

Please contact INDEC Medical Systems or visit www.indecmedical.com to determine if your existing INDEC System could benefit from the addition of our new MIB 2D/3D Pre/Post Visualization Software Module.

INDEC Systems, Inc.

2210 Martin Ave.

Santa Clara, CA 95050

Tel: 1-408-986-1600

www.indecsystems.com