

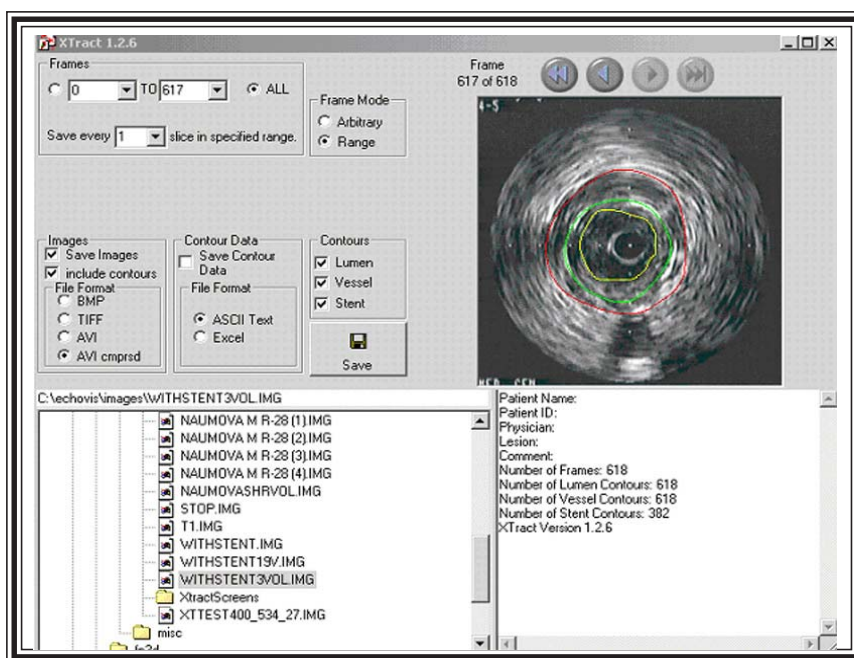
# Xtract™

## Save IVUS Pullback as Separate TIF Images or AVI file

**Xtract** is the perfect utility to separate your echoPlaque longitudinal images into individual TIF or BMP images or to create an AVI file.

### Key Features:

- A Foundation System and IVUS Plus utility – runs on the same platform as echoPlaque and TapeMeasure Plus (or MIA).
- Save your pullback as an AVI or WMV file for presentations - compress for smaller filesize.
- Easily and quickly separate slices from an echoPlaque longitudinal pullback file to individual TIF or BMP images.
- Contour coordinates generated in a separate file for easy additional analysis.
- Easy selection of desired range or individual frames.
- Pick your desired stepping interval to export – every frame, every other frame, every 3<sup>rd</sup> frame, etc.



Contour Data sections allows the export of contour coordinates and centroid.

Sample from Data file:

Calibration = 38.0625

Slice Thickness = 6.666667E-02 mm

Pullback slice = 298

LUMEN CONTOUR

POINT	X	Y
0	70	111
1	70	111
2	70	112
3	69	112
4	68	113
5	67	114
6	67	114
7	66	115
8	65	116

•  
•  
•  
•

289	78	107
290	77	107
291	76	108
292	75	108
293	74	108
294	74	109
295	73	109
296	70	111

Average Diameter 3.692063 mm

Cross Sectional Area 10.57735 mm<sup>2</sup>

Maximum Diameter 4.148812 mm

Minimum Diameter 3.121125 mm

Centroid = (109, 144)

MEDIAL CONTOUR

POINT	X	Y
0	79	97
1	79	97
2	78	97
3	77	98
4	77	98

•  
•  
•