

# echoPlaque™ 3.0

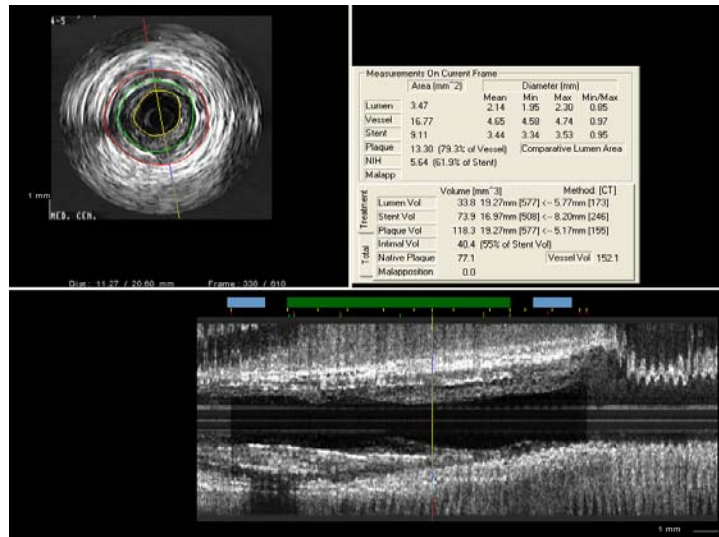
New, Improved, and More Powerful  
Than Ever Before

echoPlaque™ 3.0 is the highly anticipated release of the most popular IVUS analysis program in the world. With new, easy-to-use features offering more information and analysis specific to a doctor or researcher's needs, echoPlaque™ 3.0 will improve and streamline your IVUS analysis process.

## echoPlaque™ 3.0 Features:

### ■ Region Bookmarking

- Easy-to-use, intuitive design
- Disjoint distal reference, treatment, and proximal reference regions
- Independent volume and plaque calculations for each region
- Two stent analysis capability



Measurements On Current Frame					
	Area (mm <sup>2</sup> )	Mean	Min	Max	Min/Max
Lumen	3.47	2.14	1.95	2.30	0.95
Vessel	16.77	4.55	4.50	4.74	0.97
Stent	9.11	3.44	3.34	3.53	0.95
Plaque	13.30 (79.2% of Vessel)	Comparative Lumen Area			
NIH	5.64 (61.9% of Stent)				
Malapp:					
	Volume (mm <sup>3</sup> )	Method (CT)			
Lumen Vol	33.9 19.27mm (577) ← 5.77mm (173)				
Stent Vol	73.9 16.97mm (508) ← 8.20mm (246)				
Plaque Vol	118.3 18.27mm (577) ← 5.17mm (195)				
Intralum Vol	40.4 (55% of Stent Vol)				
Total	Native Plaque 77.1	Vessel Vol 152.1			
Malapposition	0.0				

### ■ Improved automatic lumen edge-detection

### ■ Faster handling of DICOM files

### ■ Improved ease-of-use with keyboard commands and hotkeys

Frame	Pos	MaxLD	MinLD	AvgLD	LArea	MaxVD	MinVD	AvgVD	VArea	PArea	MinLA	V_vol	L_vol	P_vol	Param
7	207	6.7													
8	251	8.37													
9	1.67	2.48216	2.25608	2.37	4.29039	4.30196	3.99529	4.13961	13.2555	8.96529	3.96	22.6794	7.300254	15.12450	values
10	252	6.4													
11	541	18.03													
12	9.63	2.40576	2.1259	2.26883	3.9369	4.76214	4.39841	4.57445	16.228	12.2908	2.89	156.816	38.0435	118.6412	values
13	542	18.07													
14	602	20.07													
15	0	2.302459	2.61984	2.81311	6.07049	4.78967	4.38361	4.61115	16.457	10.3964	5.27	33.4627	12.34333	20.91361	values
16	0	0	0	0	0	0	0	0	0	0	0	0	0	0	0
17	Frame	Pos	MaxLD	MinLD	AvgLD	LArea	MaxVD	MinVD	AvgVD	VArea	PArea	MinLA	V_vol	L_vol	P_vol
18	0	0	0	0	0	0	0	0	0	0	0	0	0	0	0
19	1	0.03	0	0	0	0	0	0	0	0	0	0	0	0	0
20	2	0.07	0	0	0	0	0	0	0	0	0	0	0	0	0
21	3	0.11	0	0	0	0	0	0	0	0	0	0	0	0	0
22	4	0.13	0	0	0	0	0	0	0	0	0	0	0	0	0
23	5	0.17	0	0	0	0	0	0	0	0	0	0	0	0	0
24	6	0.2	0	0	0	0	0	0	0	0	0	0	0	0	0
25	7	0.23	0	0	0	0	0	0	0	0	0	0	0	0	0
26	8	0.27	0	0	0	0	0	0	0	0	0	0	0	0	0
27	9	0.3	0	0	0	0	0	0	0	0	0	0	0	0	0
28	10	0.33	0	0	0	0	0	0	0	0	0	0	0	0	0
29	11	0.37	0	0	0	0	0	0	0	0	0	0	0	0	0
30	12	0.4	0	0	0	0	0	0	0	0	0	0	0	0	0
31	13	0.43	0	0	0	0	0	0	0	0	0	0	0	0	0
32	14	0.47	0	0	0	0	0	0	0	0	0	0	0	0	0
33	15	0.5	0	0	0	0	0	0	0	0	0	0	0	0	0
34	16	0.53	0	0	0	0	0	0	0	0	0	0	0	0	0
35	17	0.57	0	0	0	0	0	0	0	0	0	0	0	0	0
36	18	0.6	0	0	0	0	0	0	0	0	0	0	0	0	0
37	19	0.63	0	0	0	0	0	0	0	0	0	0	0	0	0
38	20	0.67	0	0	0	0	0	0	0	0	0	0	0	0	0

*AUTOMATIC EXPORT TO SPREADSHEET AND DATA SUMMARY FILE: Main page of new data summary program. Displays independent calculations for distal, treatment, and proximal Avg regions. MSA calculations and log files are also included.*

iLab™ Ultrasound Imaging is a trademark of Boston Scientific Corporation

**INDEC SYSTEMS, INC. :: 2210 Martin Ave. :: Santa Clara, CA 95050**  
Tel: 408 986 1600 :: FAX: 408 986 1605 :: [www.indecmedical.com](http://www.indecmedical.com) :: [info@indecmedical.com](mailto:info@indecmedical.com)

- Supports Boston Scientific's iLab™ audio and image files
- Post-Acquisition Brightness and Contrast Adjustment
- Supports Wiggle Mode - ("Dynamic Review")
- New summation program
- Multiple compression types for DICOM files
- Mal-apposed stent area measurement

For information, contact INDEC Medical Systems.