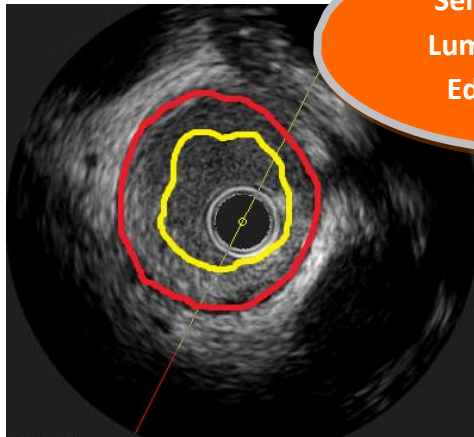


echoPlaque 4

With new features to increase the speed and efficiency of IVUS and OCT analysis

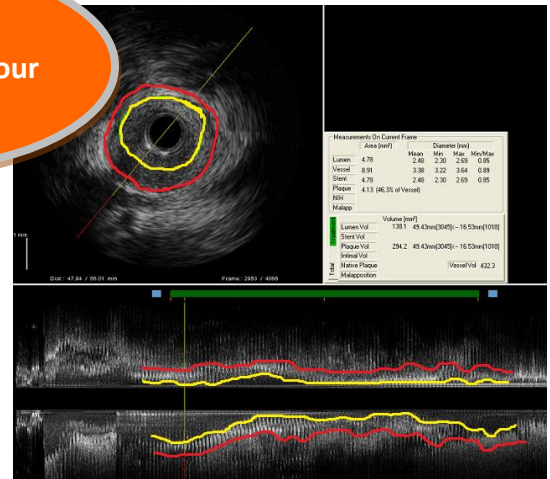
Semi-Automated
Lumen and Vessel
Edge Detection



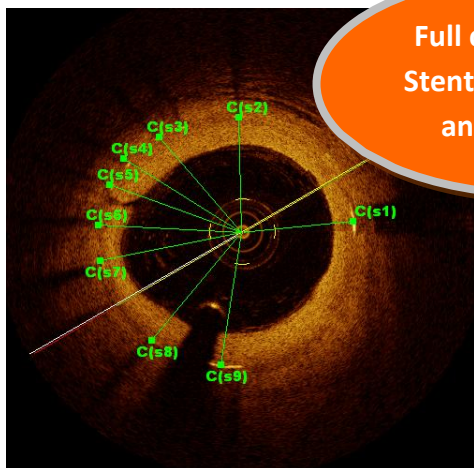
Get a head start on IVUS and OCT analysis with refined lumen edge detection and brand new vessel edge detection.

Improved
Longitudinal Contour
Drawing

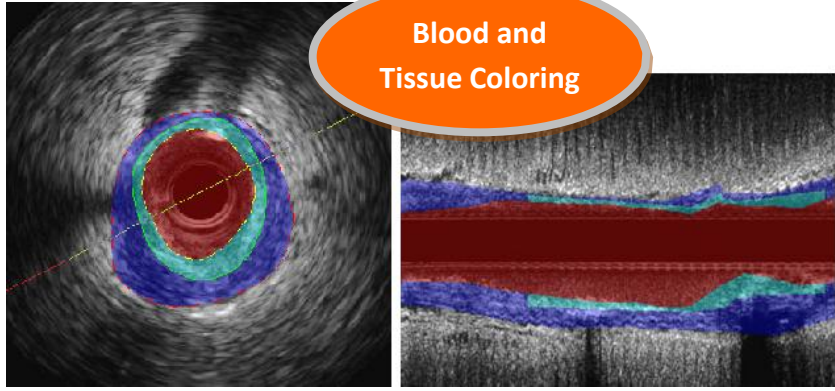
Streamline contour detection by drawing borders on the longitudinal. Use in conjunction with transverse contour drawing to reduce analysis time.



Full color OCT with
Stent Strut Counting
and Classifying



Full color OCT analysis with a new stent strut counting and classifying system that includes distance and angular measurements. Results are added to DAT Spreadsheet file and saved with the file for further analysis.



Blood and Tissue Coloring

Anatomical coloring to highlight blood speckle, native plaque, neo-intimal plaque, and malapposition.

- Min Lumen Area
- Min Lumen Diameter
- Min Stent Area
- Min Stent Diameter
- Max Plaque Area

Frame Jump Menu

New Frame Jump Menu accelerates navigation by jumping to the frame containing the Min Lumen Area, Min Lumen Diameter, Min Stent Area, and more.

Many additional features!

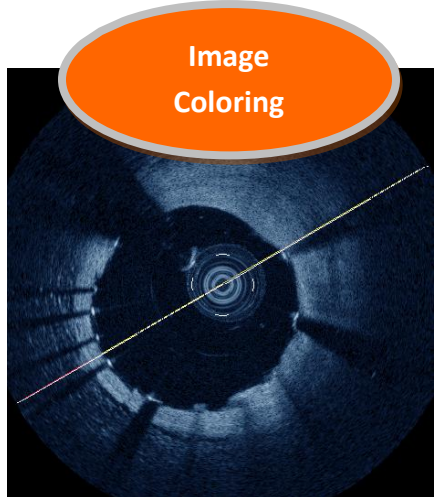
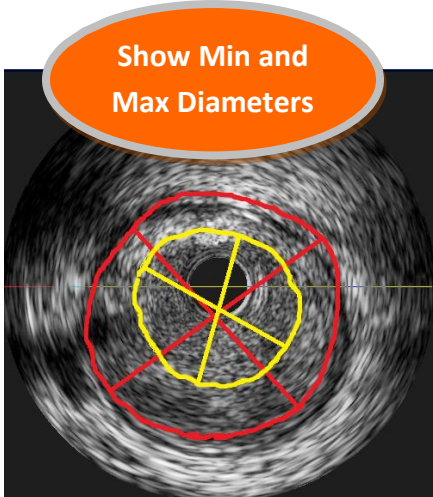
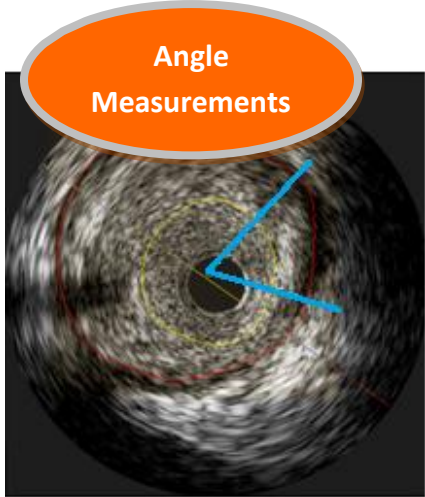


Image Coloring



Show Min and Max Diameters



Angle Measurements