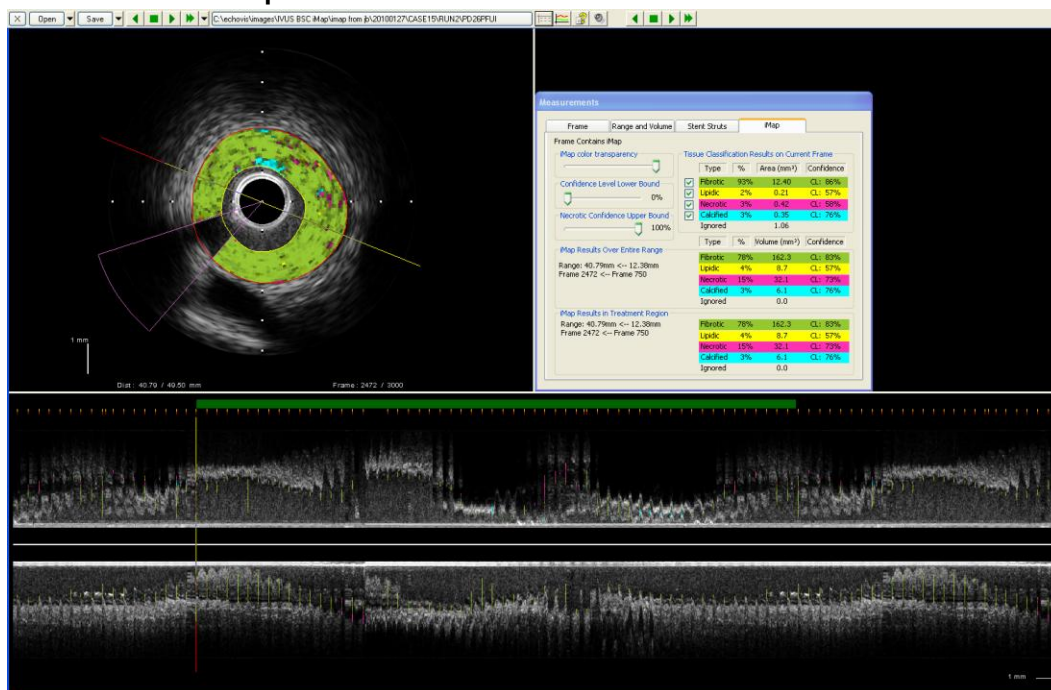


Review and Analysis of iMap™ Data Using INDEC's echoPlaque Software

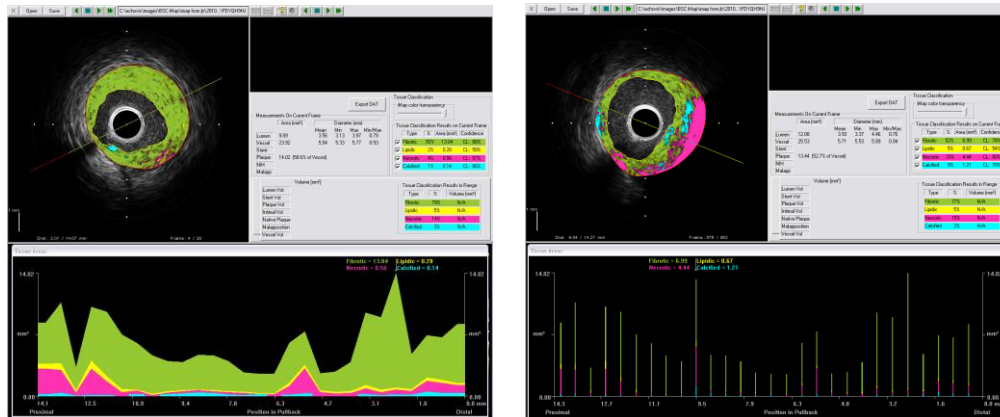
INDEC's echoPlaque software is now fully compatible with your Boston Scientific iMap™ tissue classification datasets. Perform all of your iMap analysis using the world-leading IVUS review and analysis software.

- Load grayscale pullbacks with full color iMap data and contours
- Multiple load modes (iMap frames only or full pullback with iMap)
- Create new or edit existing contours
- Area, tissue percent, and volume measures over individual frames and multiple regions
- Choose which tissue types are included in classification
- Confidence Level threshold to refine results
- No-Fly Zones to exclude wire artifacts and calcium dropout
- Export full measurement results to spreadsheet reports
- Full support for existing features: draw stent contours, create regions, compute volumes
- Compatible with INDEC's Liberator storage software - query, retrieve, and store your iMap data

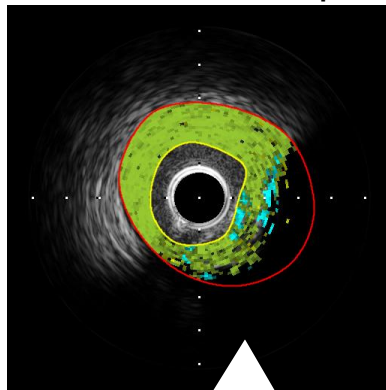
Display Boston Scientific iMap images, contours, and measurement results. Edit or create new contours to obtain updated tissue classification measurements.



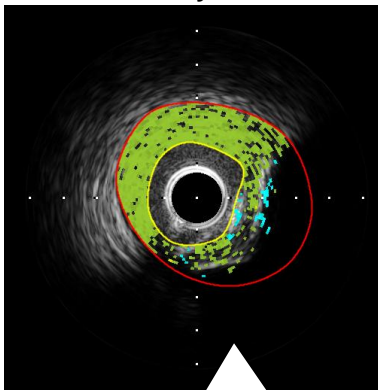
INDEC Systems, Inc. 4701 Patrick Henry Drive, Building 24, Suite 2401, Santa Clara, CA 95054
Tel: 1-408-986-1600 www.indecsystems.com



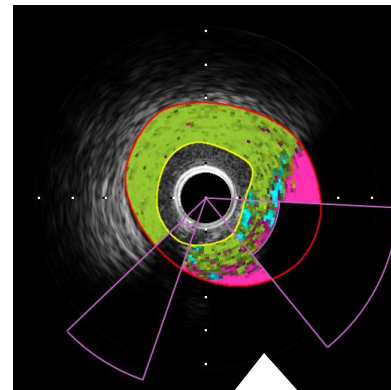
Additional features to improve and enhance analysis



**Ignore tissue type
(necrotic is ignored)**



**Set Confidence Level
thresholds**



**No-Fly zones to block out
wire artifact or dropout**

Frame-by-frame and region results are shown in echoPlaque. In-depth results can be exported to Excel-compatible DAT spreadsheet files

Tissue Classification Results on Current Frame

Type	%	Area (mm ²)	Confidence
<input checked="" type="checkbox"/> Fibrotic	75%	10.98	CL: 87%
<input checked="" type="checkbox"/> Lipidic	2%	0.23	CL: 53%
<input checked="" type="checkbox"/> Necrotic	18%	2.61	CL: 83%
<input checked="" type="checkbox"/> Calcified	5%	0.77	CL: 75%
Ignored		3.30	

Type	%	Volume (mm ³)	Confidence
Fibrotic	78%	70.0	CL: 82%
Lipidic	4%	4.0	CL: 57%
Necrotic	13%	12.0	CL: 73%
Calcified	3%	2.4	CL: 74%
Ignored		1.6	

